



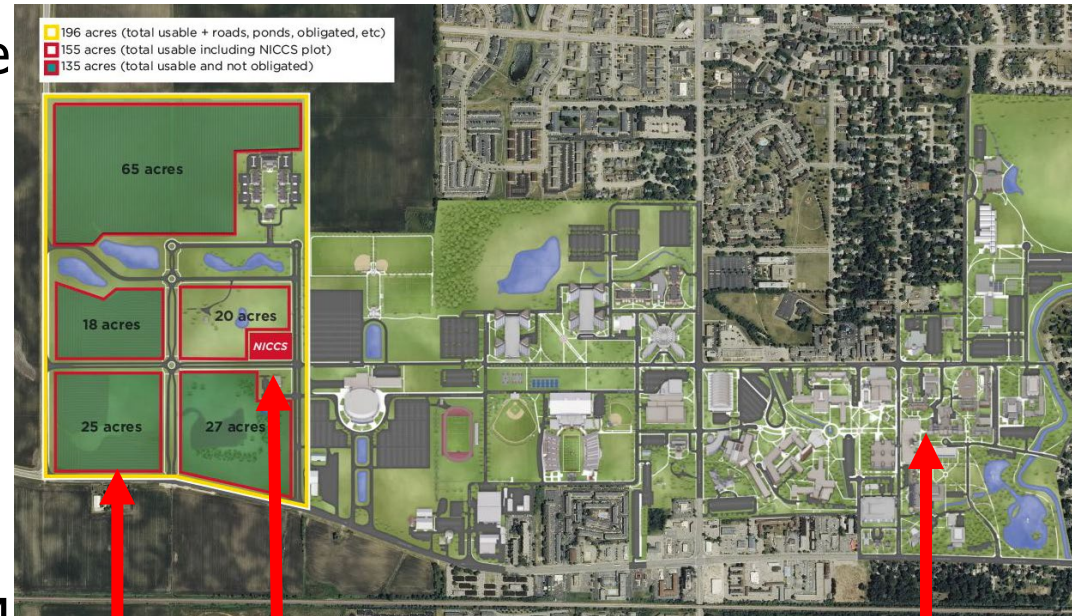
## Status, Programs, and Outlook

November 2022

# Where and What?



- West Campus
- First non-UI system Hub of IIN
- Envisaged as a ~30,000 square foot facility that features
  - classrooms for face-to-face & remote meetings
  - laboratories for research and partnerships
  - spaces to encourage multi-disciplinary collaboration, public outreach, and policy development.
- Cost: \$23M (\$15M State + \$8M cost match)



West Campus

NICCS

We are here

# Mission



- Address the **challenges of environmental change, shifting demographics and sociopolitical inequity** impacting our region and the world.
- Connect research and innovation to advance sustainability in **food systems, water resources and environmental adaptation** while also **promoting science-based policies and practices** for communities.
- <https://www.niu.edu/niccs/index.shtml>

# Activities



- Monthly meetings and planning exercises among ~40 faculty affiliates advancing efforts in three emphases.
- Active participant in Illinois Innovation Network
- Portfolio of research efforts
- Developing partnerships with public, government and private sectors



DEKALB COUNTY  
**COMMUNITY  
GARDENS**



# Funded Efforts



- **Environmental Change**
  - Functional Consequences of Species Gains and Losses on Prairie Restoration (NSF)
  - Climate Modelling for Northern Illinois Agriculture (CFP)
  - Climate Modelling for Weather Perils (American Family)
- **Water Resources**
  - Impact of Prairie Restoration on Water Quality (NSF)
  - Forever Chemicals: PFAS Detection, Fate and Transport in Illinois (IIN)
  - Sustainable Water Supply System in Illinois Using Innovative Electrochemical Treatment Technology (IIN)
- **Food Systems**
  - Sustainable Urban-Regional Modeling Network (SURE Modeling) (IIN)
  - Modification of Basil Flavor via Adjustment of Light Environment (IIN)
  - Development of Robotic Technologies Tailored to Support Specialty Crop Production in the State of Illinois (INN)
- **Sustainability & Policy**
  - Integrated Logistical, Techno-economic and Socio-environmental Assessment Framework for Sustained Municipal Solid Waste Conversion Facilities (IIN)
  - Building a Sustainable Geo-STEM Learning Ecosystem for Illinois Teachers (IIN)
  - Development and Application of a Novel Cancer-Mortality Index in Illinois: Discovering Opportunities for Public Health Intervention (IIN)
  - Establishing a Caregiver Stakeholder Registry for Collaboration for Health Equity, Engaging Technology for Aging in the Home (IIN)

# When and Who?



- Construction:
  - Capital Development Board has started process.
  - Epstein and Sons, Chicago has been selected for development of “Bridging Documents”.
  - The bridging documents will be used for a “design-build” RFP which can take 6-12 months until selection.
  - If all goes well, could see design-build process starting CY 2024.
- Personnel:
  - Faculty Affiliates
  - Starting to staff up.
  - Developing a job description for Director
  - Dr. Courtney Gallaher will soon be full time Campus Sustainability Coordinator.

