



Northern Illinois University

Campus Construction Activity
and
Health Technology Center Update

August 2023

Gabel Hall



Cole Hall



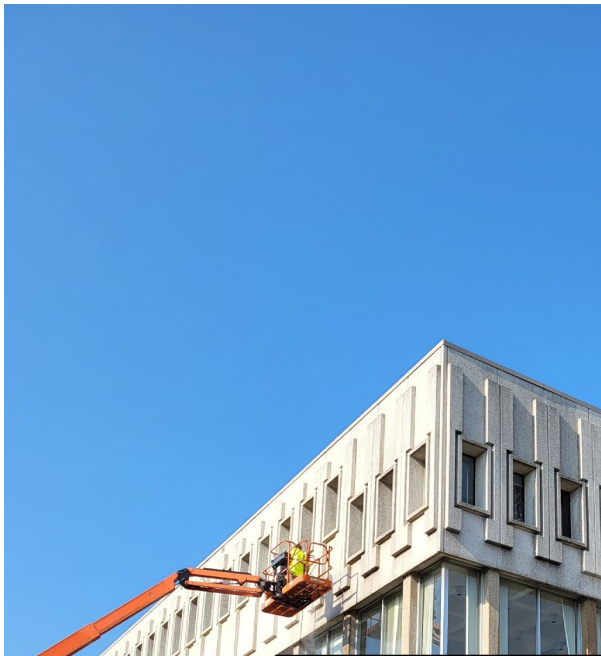
Neptune West



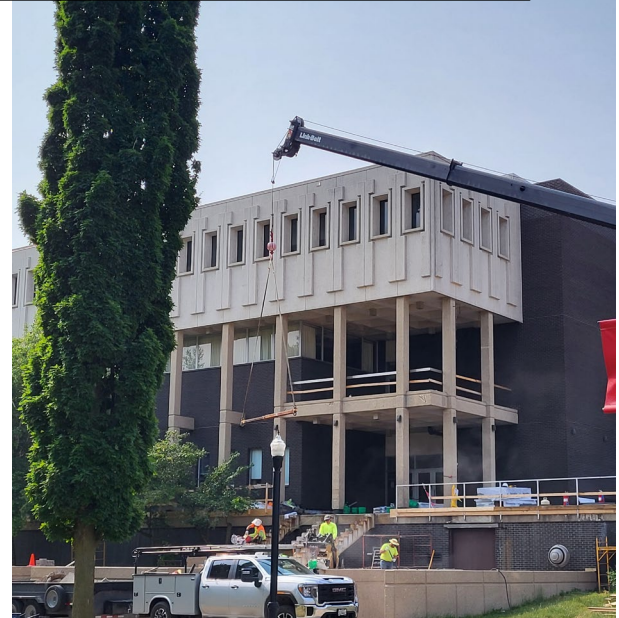
State project (~\$5M) for steam tunnel repairs



Watson Creek bridge

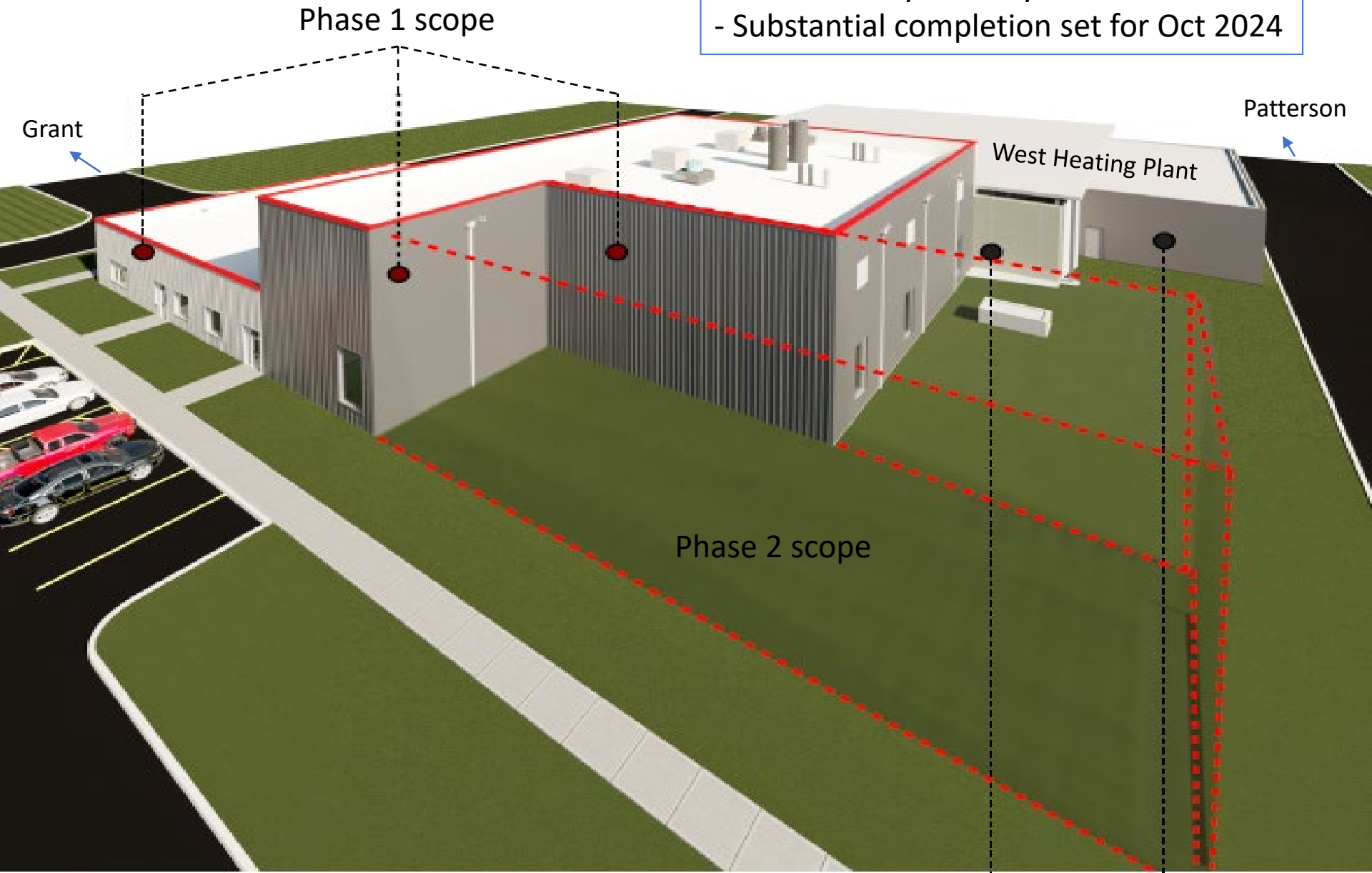


State project (~\$3.75M) for Visual Arts structural repairs



Boiler Replacement Project Ph 1

- Awarded July 2023 by CDB
- Substantial completion set for Oct 2024





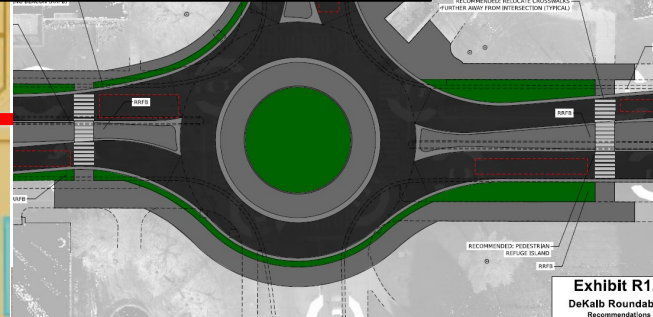
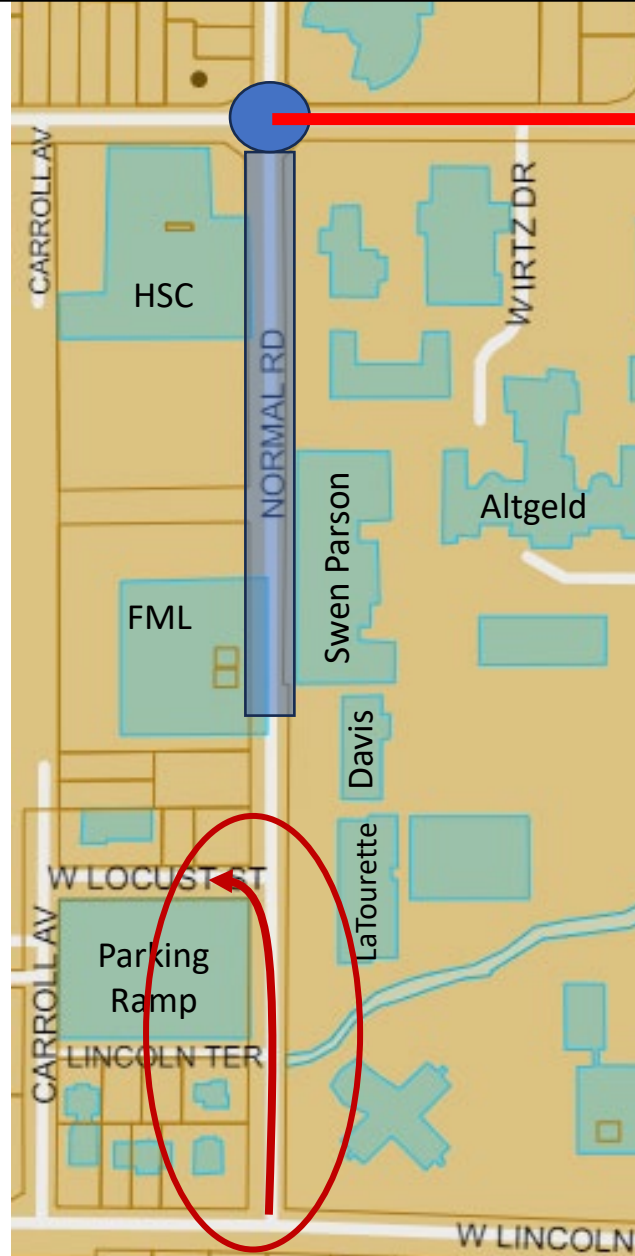
Nursing Relocation to Wellness/Literacy 2nd Floor



City project for transforming section of Normal Road



11 Aug 2023



11 Aug 2023



Summer 2025



Summer 2025



Roof repairs
Neptune East



Paving repairs to lots and roads



Envelope repairs



Waterline repair
Lowden



20 elevator repairs
across campus





Continuing In-House Maintenance/Logistical Ops



Questions?

<https://go.niu.edu/construction-projects>





Northern Illinois University

Your Future. Our Focus.

Health Technology Center (HTC)

Design Update
August, 2023

Guiding Principles



PROJECT GOALS
OPPORTUNITIES

PILLARS/
GUIDING
PRINCIPLES

THEME

TECHNOLOGY

*Technology as the
Connective Tissue*



This facility will be the "stepping-stone" from main campus to west campus.

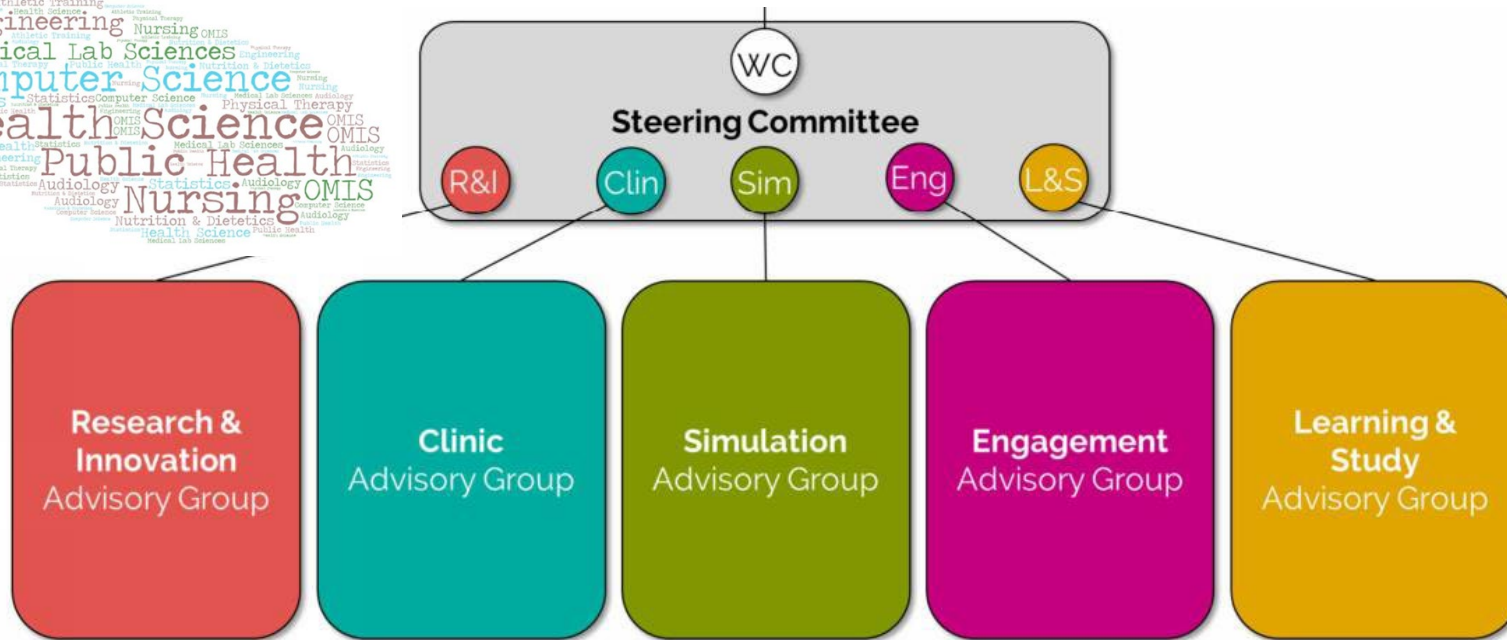
This building will need to attract faculty and students as a campus-wide amenity.

The learning environments will be a **catalyst** in how NIU will change in how we teach.

"Building for a Healthier Tomorrow"

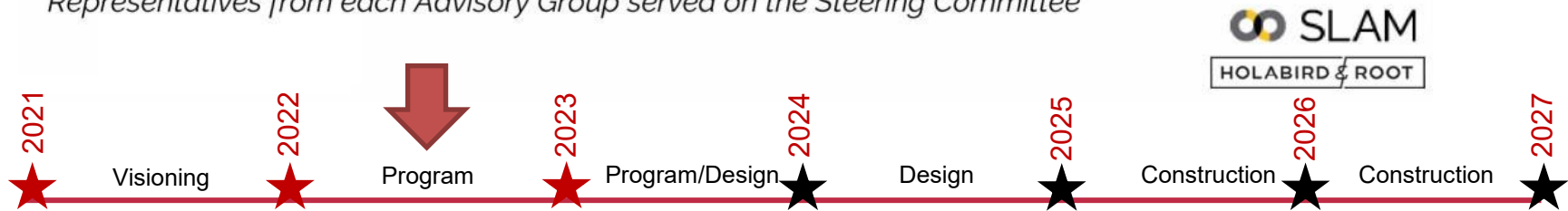
Your Future. Our Focus.

Collaborative Process



Committee Structure

Representatives from each Advisory Group served on the Steering Committee



Program Planning



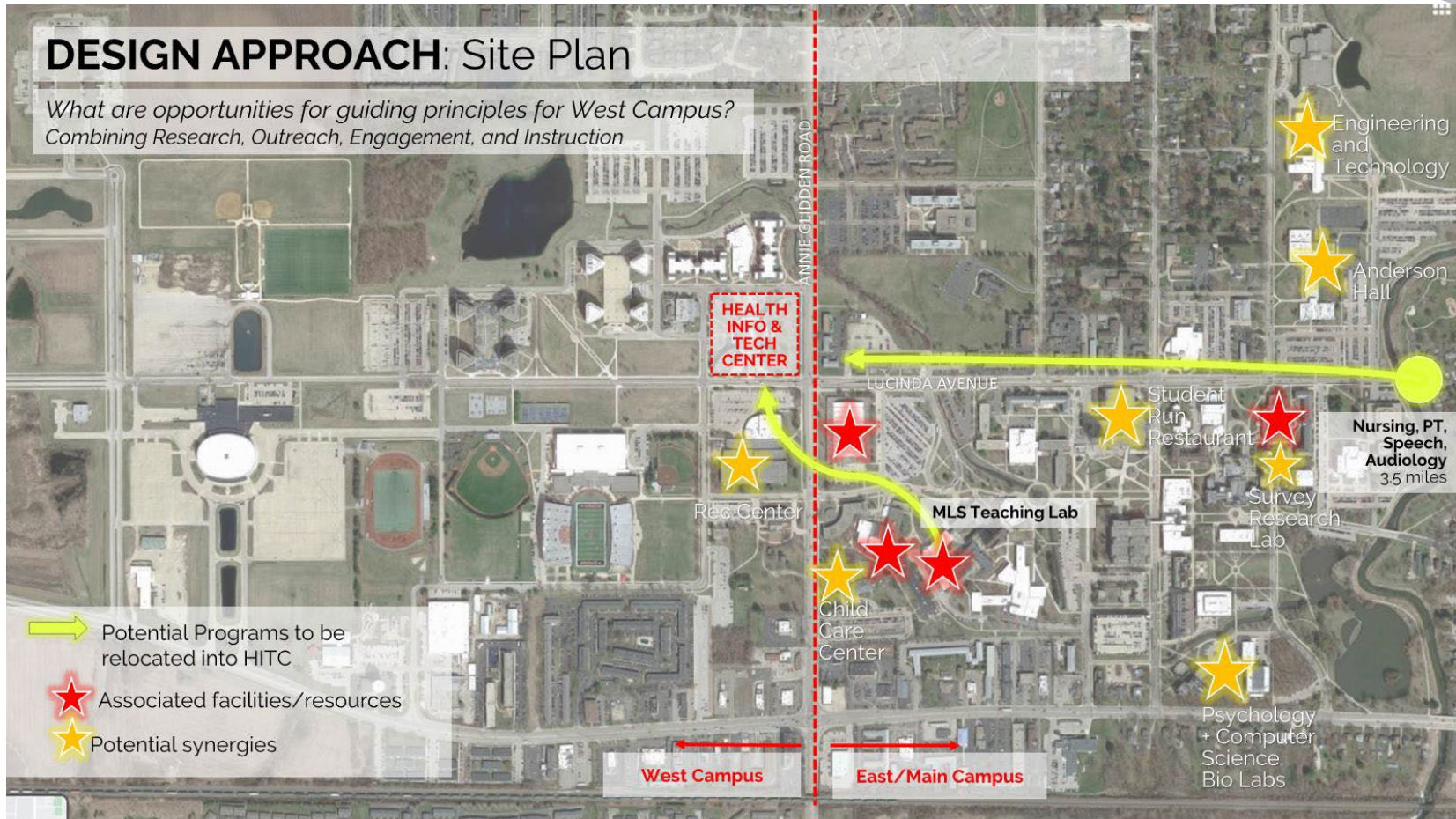
Space functions	~ 65% of overall building footprint	51,405 NSF
Classrooms	(2) 20-seat seminar rooms (1) 72-seat Classroom (divisible) (2) 150-seat Teaching and Event Space (Divisible) (2) Virtual anatomy Labs	11,750
Simulation	Simulation Center Skills, Assessment, Come-back & PT Hi-Lo Labs Sim Staff	10,950
Clinic	Shared Clinic spaces (Reception, Meeting, etc.) Speech Language Pathology Clinic, Audiology Clinic & Physical Therapy Clinics	10,630
Research & Innovation	Wet Teaching Lab Dry//Translational Research Suites Innovation Studio	7,470
Social & Community	(24) Study carrels, printer alcove Student social lounge, kitchenette, breakout seating Grab & Go Café	5,450
Office & Admin	Administrative suite Faculty/Staff touchdown suite	3,625
Support	Lobby, Personal health rooms & gender-neutral washrooms Storage, Support, receiving	1,530

Location



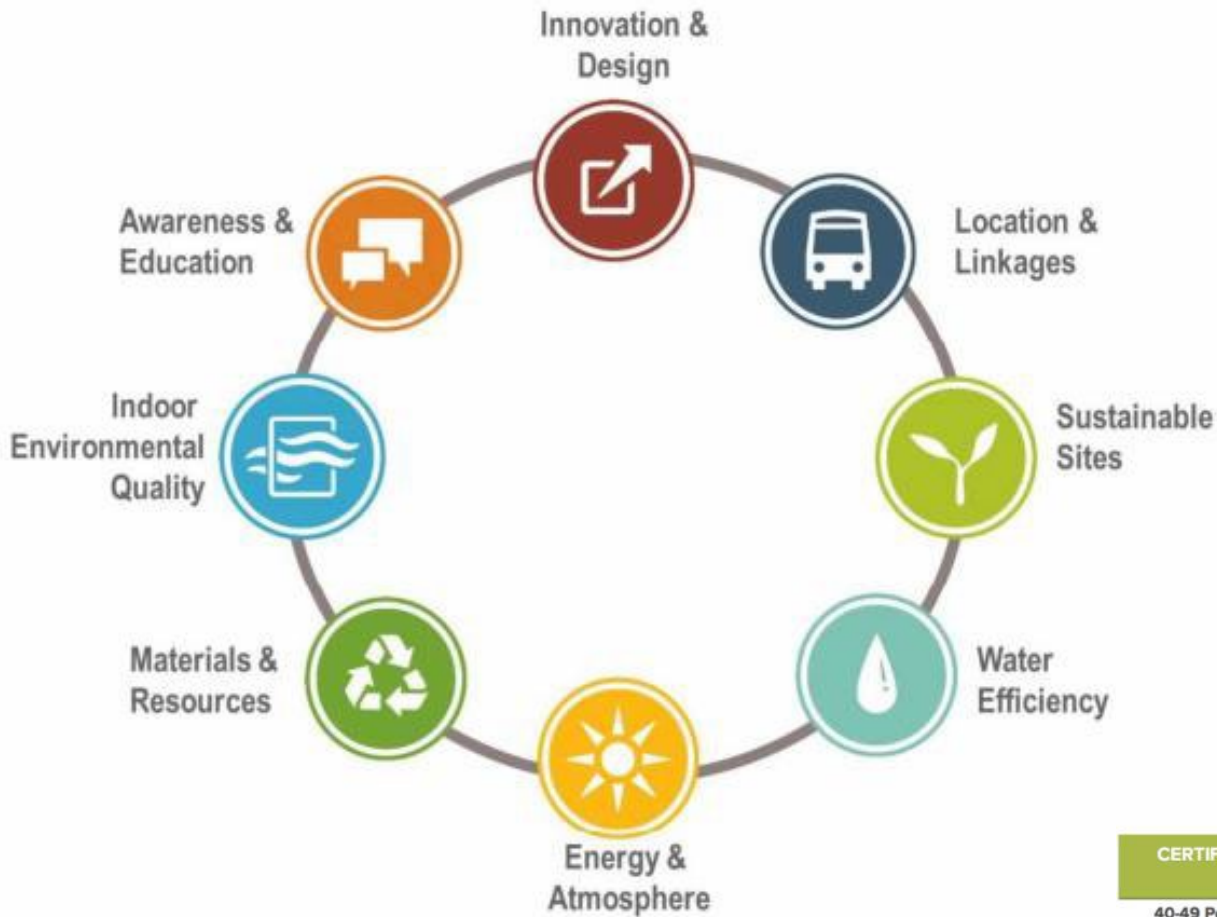
DESIGN APPROACH: Site Plan

*What are opportunities for guiding principles for West Campus?
Combining Research, Outreach, Engagement, and Instruction*



Your Future. Our Focus.

Sustainability

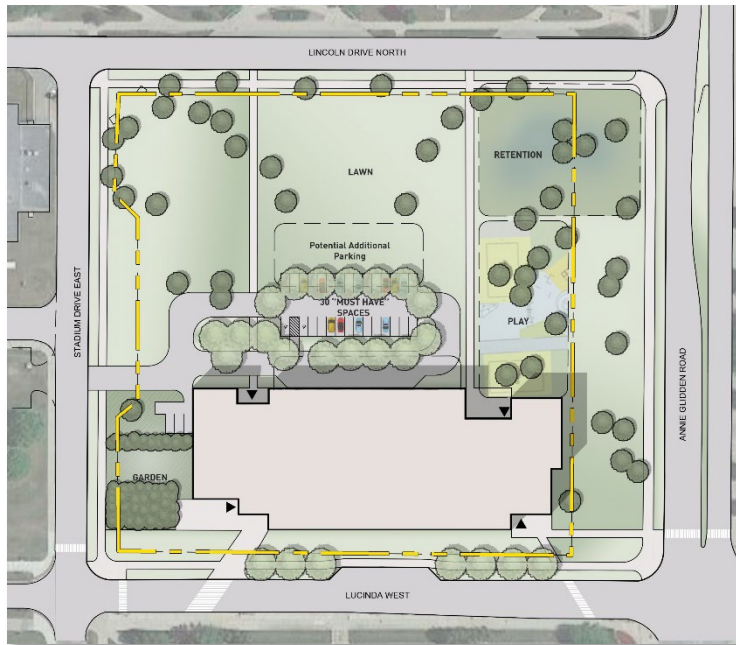


Your Future. Our Focus.

Design Concepts

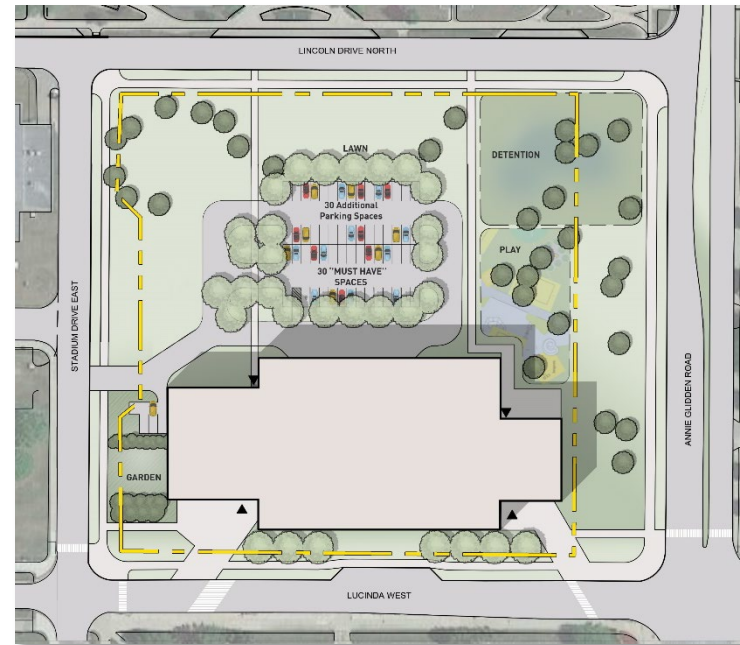


Campus Connection



- 2 Stories
- 88,000 GSF
- 45,000 GSF Ground Floor Footprint

.....Enhanced



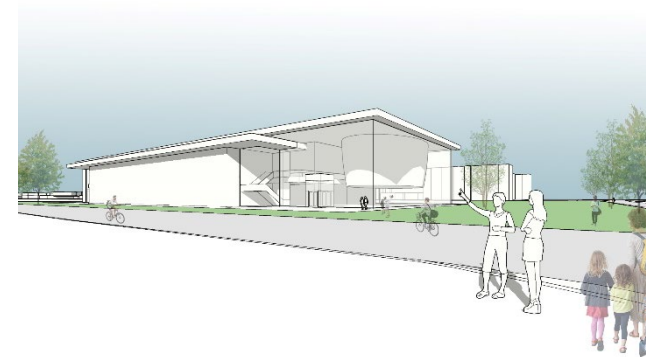
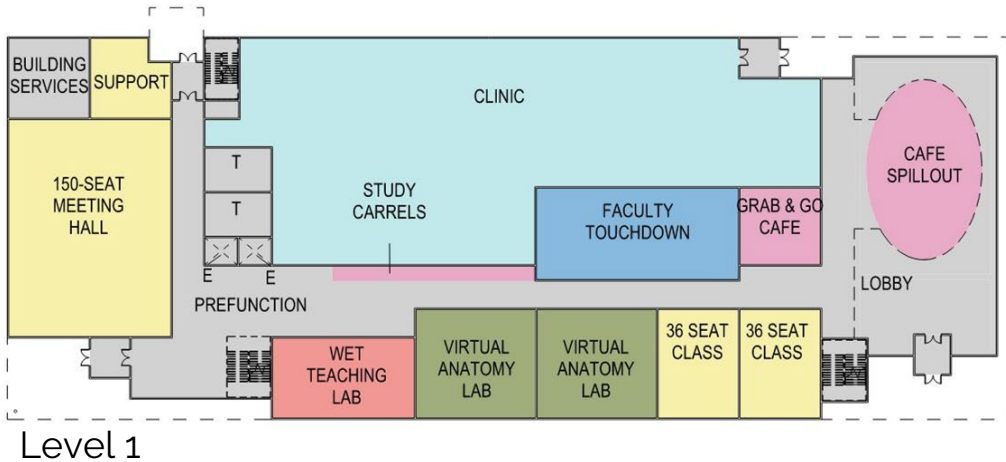
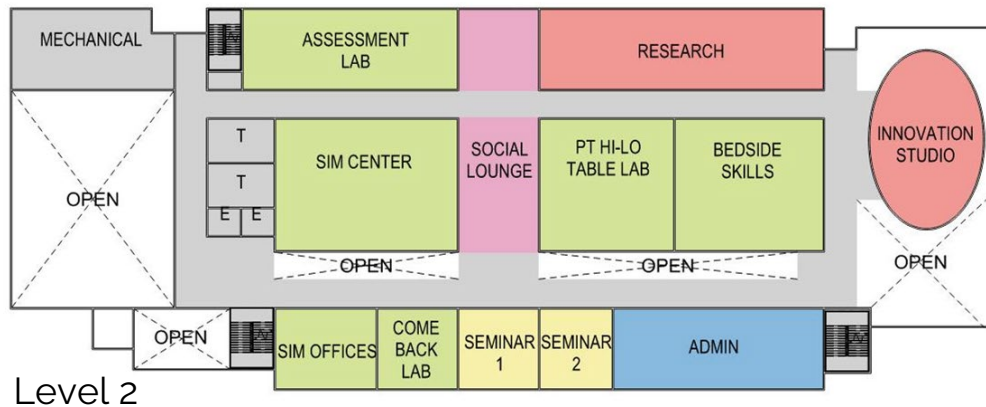
- 2 Stories
- 100,000 GSF (+12,000 GSF)
- 55,000 GSF Ground Floor Footprint

Design Concepts



Campus Connection

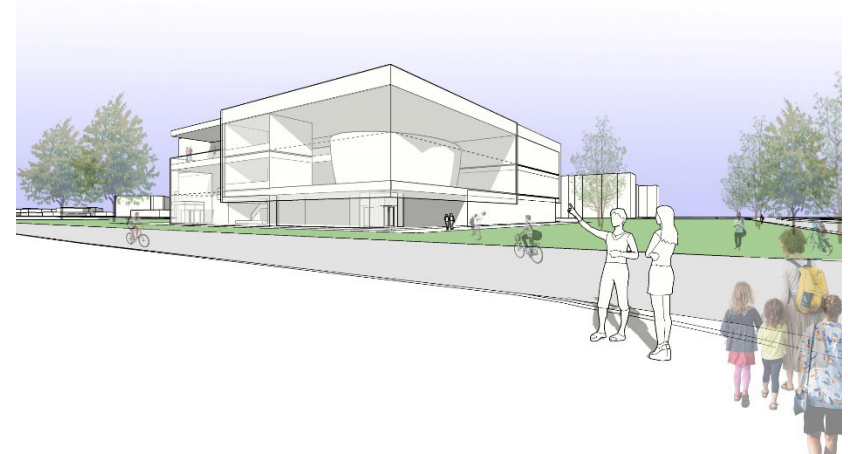
- 2-Story E-W Spine
- Encourage student pass through
- Bookend with public/larger spaces
- Potential enhancements (Nice to Haves)
 - Added lab spaces
 - Enlarged Clinic
 - More study space



Design Concepts



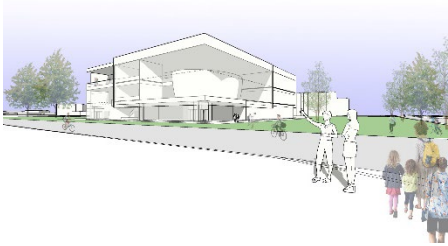
Under One Roof



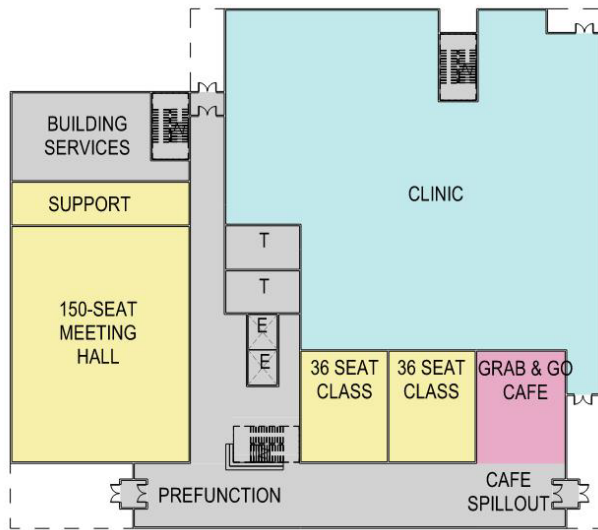
Design Concepts



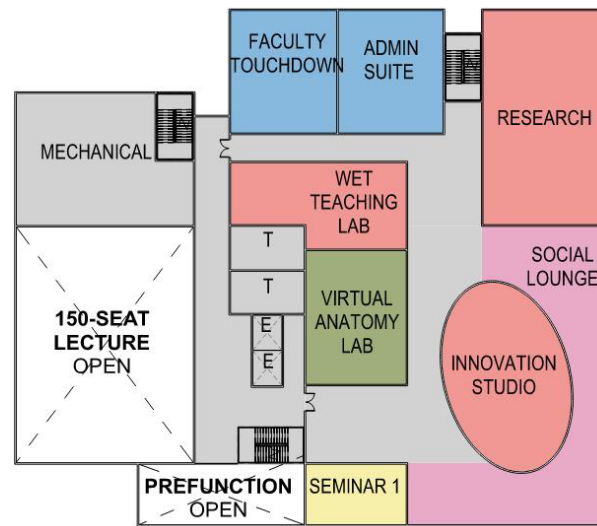
Under One Roof



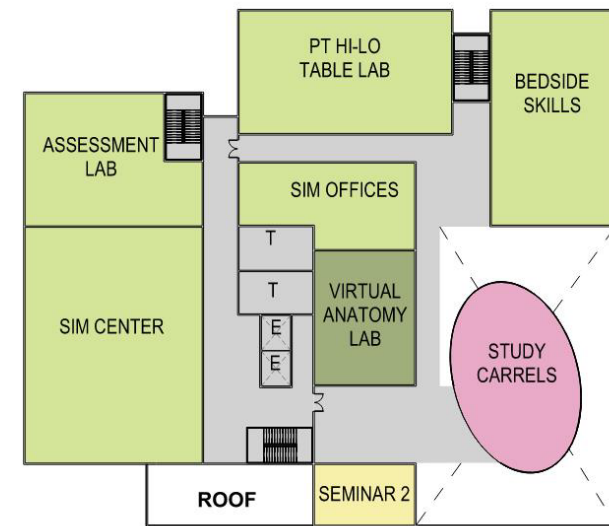
- More compact
- Two story visible communal space
- More privacy for focused activities on upper floors



Level 1



Level 2



Level 3

Conceptual Views



Your Future. Our Focus.

Next steps



- The NIU Foundation is working to identify donor opportunities to supplement state funding
- Actual project cost could range anywhere from \$10-40M beyond the allocated state funding
- Moving into Design phases we will be refining basic program and enhancement options to ensure we get the building that we need
 - Will need to firm up \$\$\$ commitment by Summer/Fall '24
- Design completion Summer/Fall '23 through Summer/Fall '24
- Potential construction timeline targets an early 2027 occupancy and features a 28-month construction period.
- Anticipate next update Spring/Summer 2024.





Northern Illinois University

Your Future. Our Focus.

Thank you

Beverly Henry, Leslie Matuszewich &
Belinda Roller