

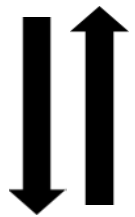


**Northern Illinois  
University**

**Selected Themes from 2023 IBHE  
“Big Picture Meeting”**

**Shared with NIU Board of Trustees on  
November 9, 2023**

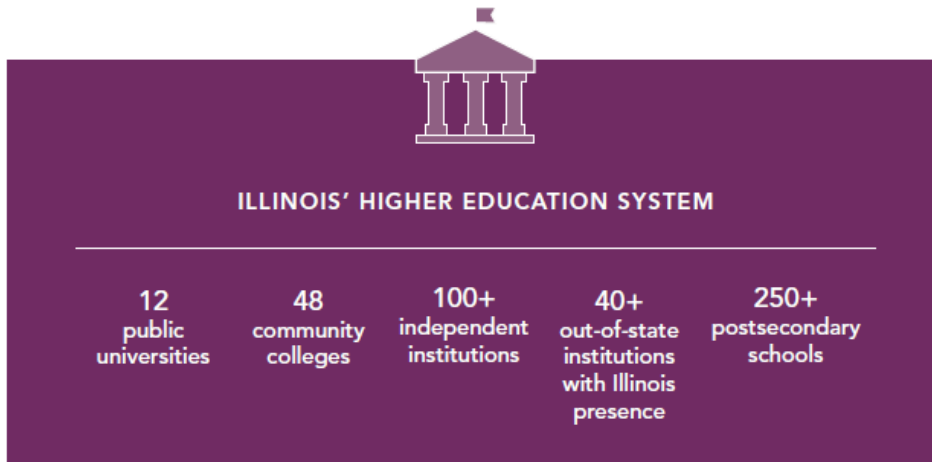
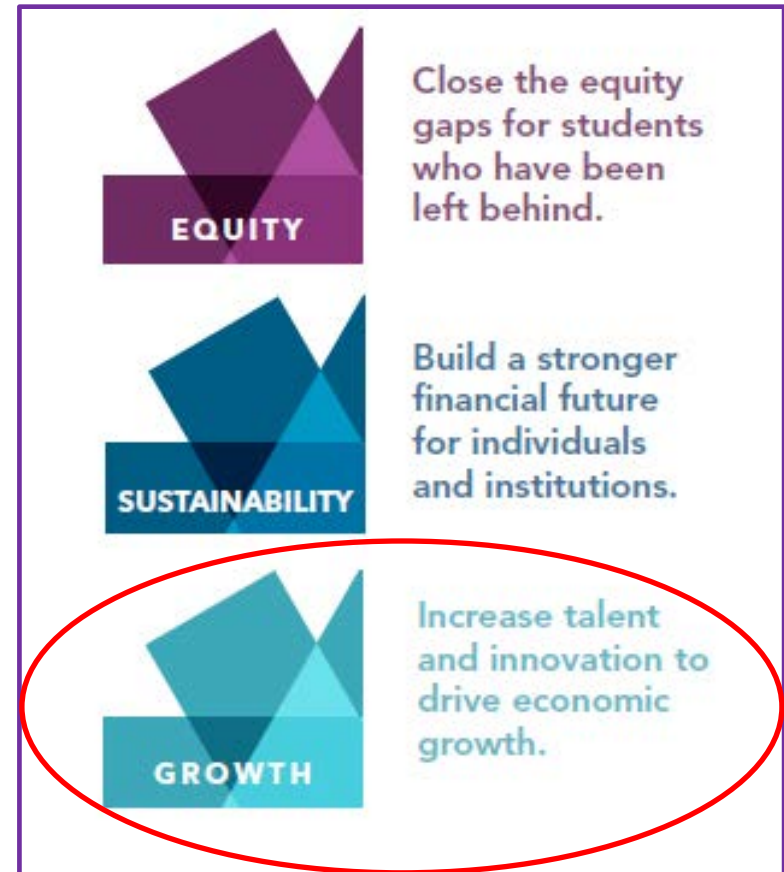
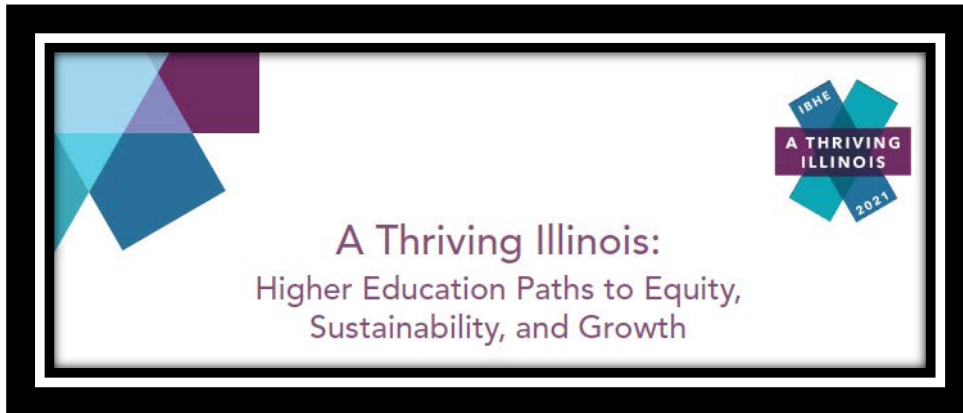
# What is “Big Picture Meeting” ?



**Northern Illinois  
University**



# IBHE Strategic Plan (adopted 2021)



# FY25 IBHE Big Picture Agenda



*Meeting Held October 17, 2023*

- Welcome and Introductions (5 min)
- Equity Data, Plans, and Practices: (30 min)
- **Growth (60 min)**
- FY 25 Budget Request (30 minutes)
- **Legislative Priorities and Initiatives (10 min)**
- Next Steps (5 min)

# *Growth Strategies for a Thriving Illinois*



1. Leverage the IIN to strengthen regional focus, while connecting the state.
2. Establish a statewide Business and Employer Advisory Council to the IBHE to invest and partner in the development of a diverse talent pipeline and to keep higher education abreast of evolving needs.
3. Align the state's economic development and higher education strategies, ensuring both address historic inequities.

# *Growth Strategies for a Thriving Illinois*



4. Encourage high school graduates to enroll in our higher education system and keep talent in Illinois.
5. Establish a consortium of community colleges and universities to better serve the incumbent early childhood workforce
6. Expand higher education models of teaching and learning that provide opportunity for students to succeed in the work of the future.

# *Growth Strategies for a Thriving Illinois*



7. Enhance access to educator preparation programs.
8. Strengthen the statewide, coordinated transfer system to ensure students have seamless paths to build on previous academic learning and earn postsecondary credentials.
9. Consider the role the private business and vocational sector plays in meeting the state's workforce needs

# Spring 2024 Legislative Priorities



- Predictable, adequate, equitable, and stable funding
- Multi-year capital support for maintenance, renewal and enhancement of facilities
- Increase transfer pathways through innovative partnerships
- Regulatory reform to promote operational efficiencies
- MAP/AIM HIGH flexibility



# Questions?

