



**Northern Illinois  
University**

**Dara C. Little**  
**Assistant Vice President for Research  
and Sponsored Programs**

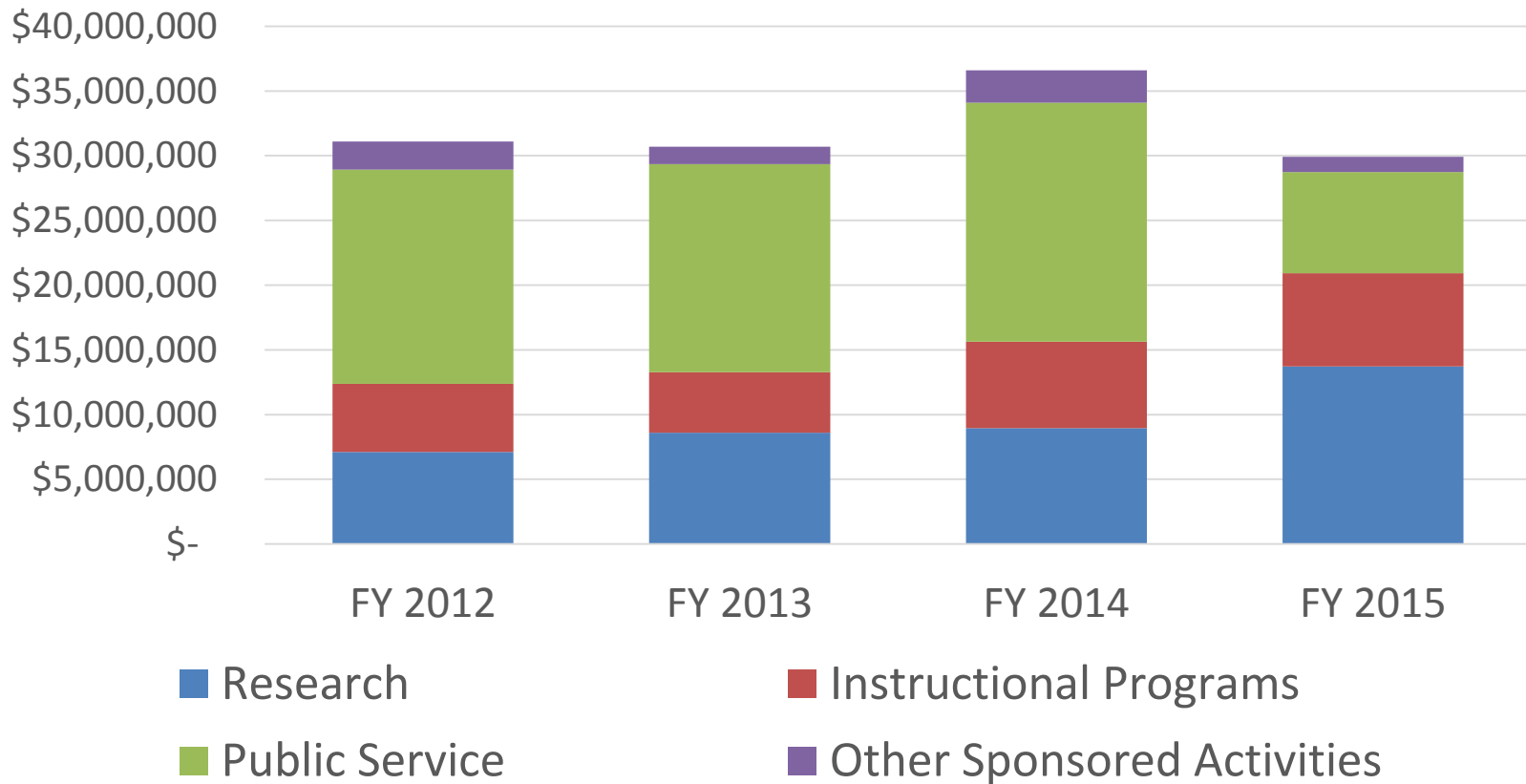
**Sponsored Programs Administration FY 2015 Funding Report**

Legislative Affairs, Research and Innovation Committee  
August 27, 2015

# Funding Overview



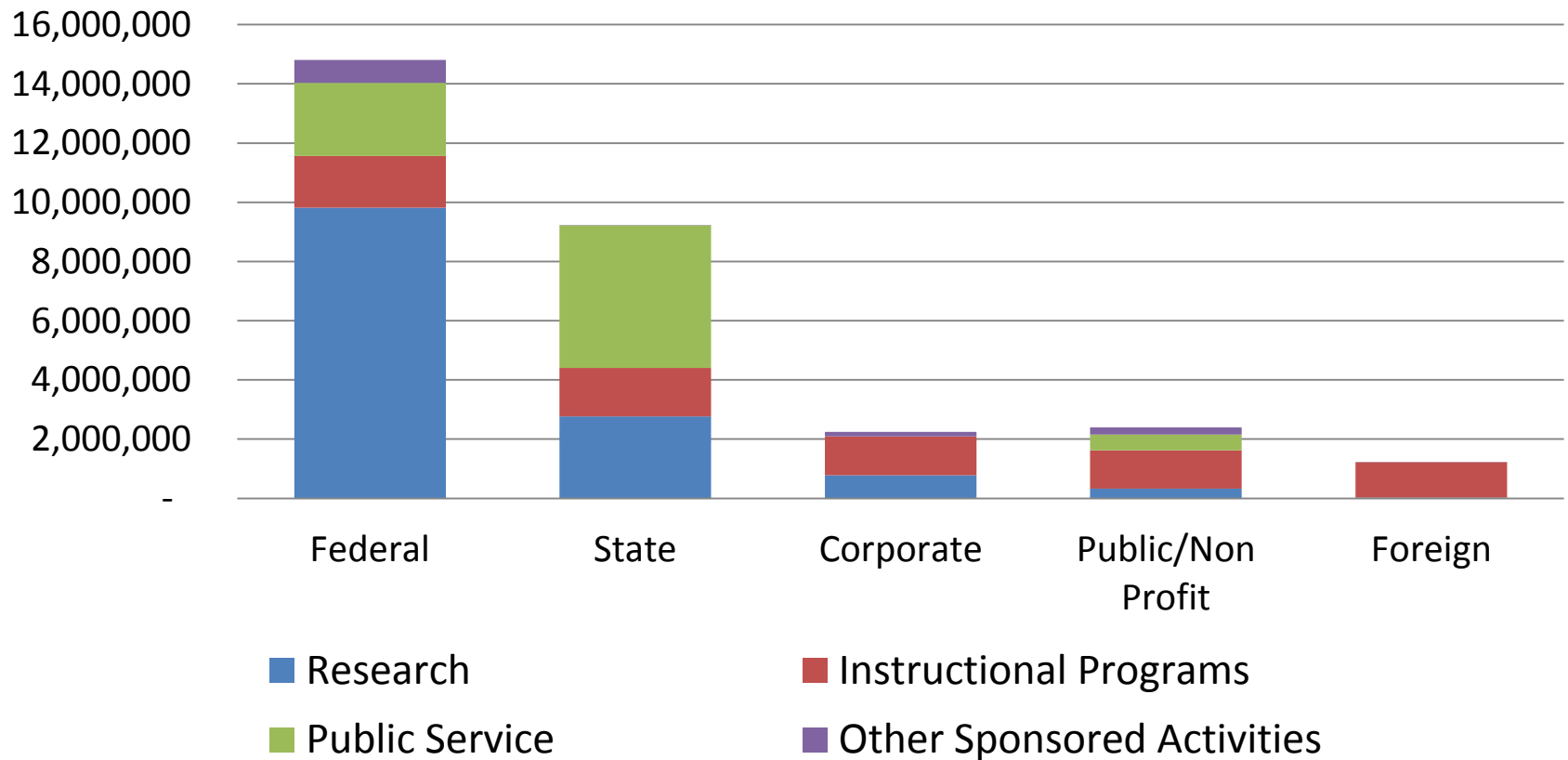
## Total Funding by Purpose



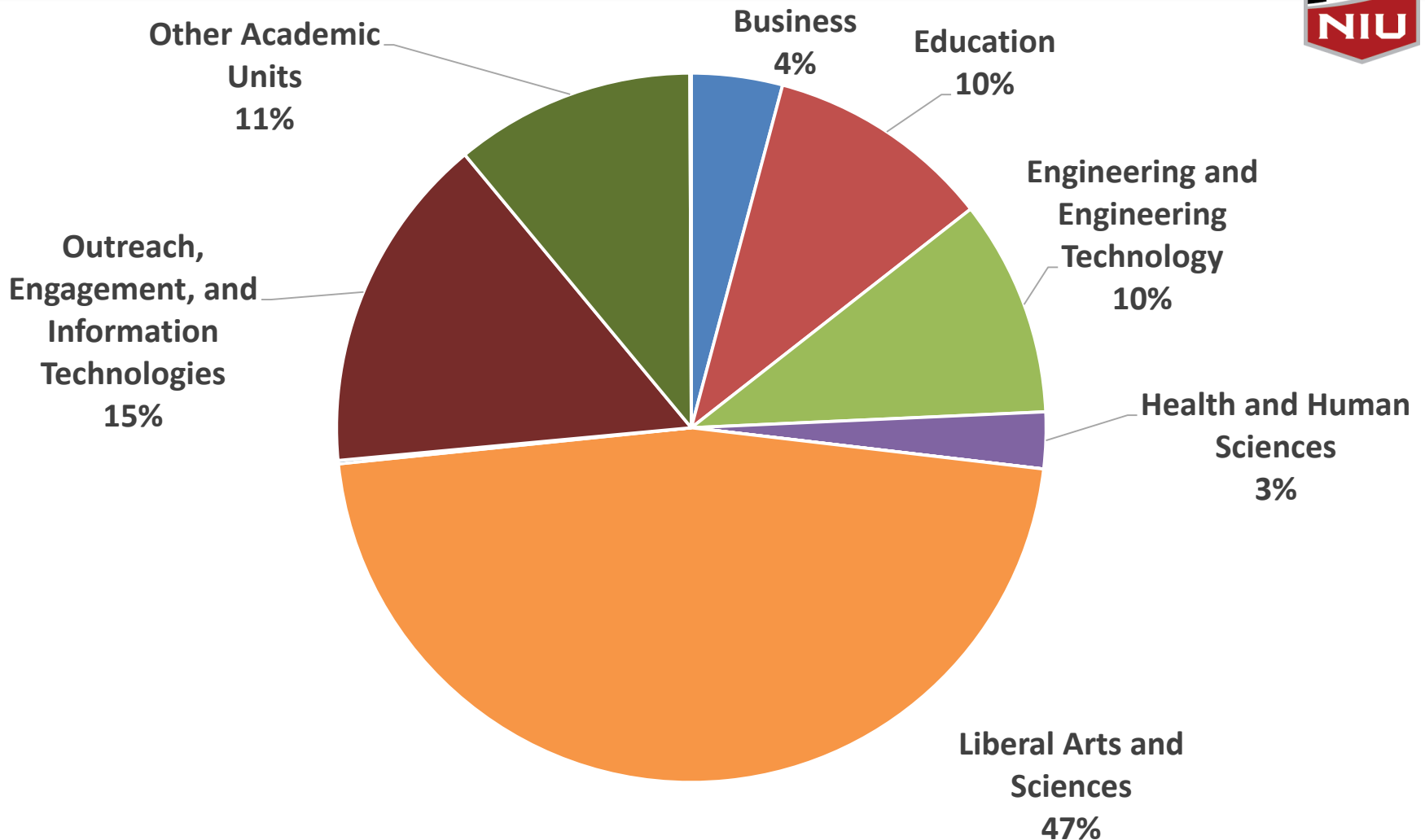
# Funding Overview



## FY 2015 Awards by Source and Activity



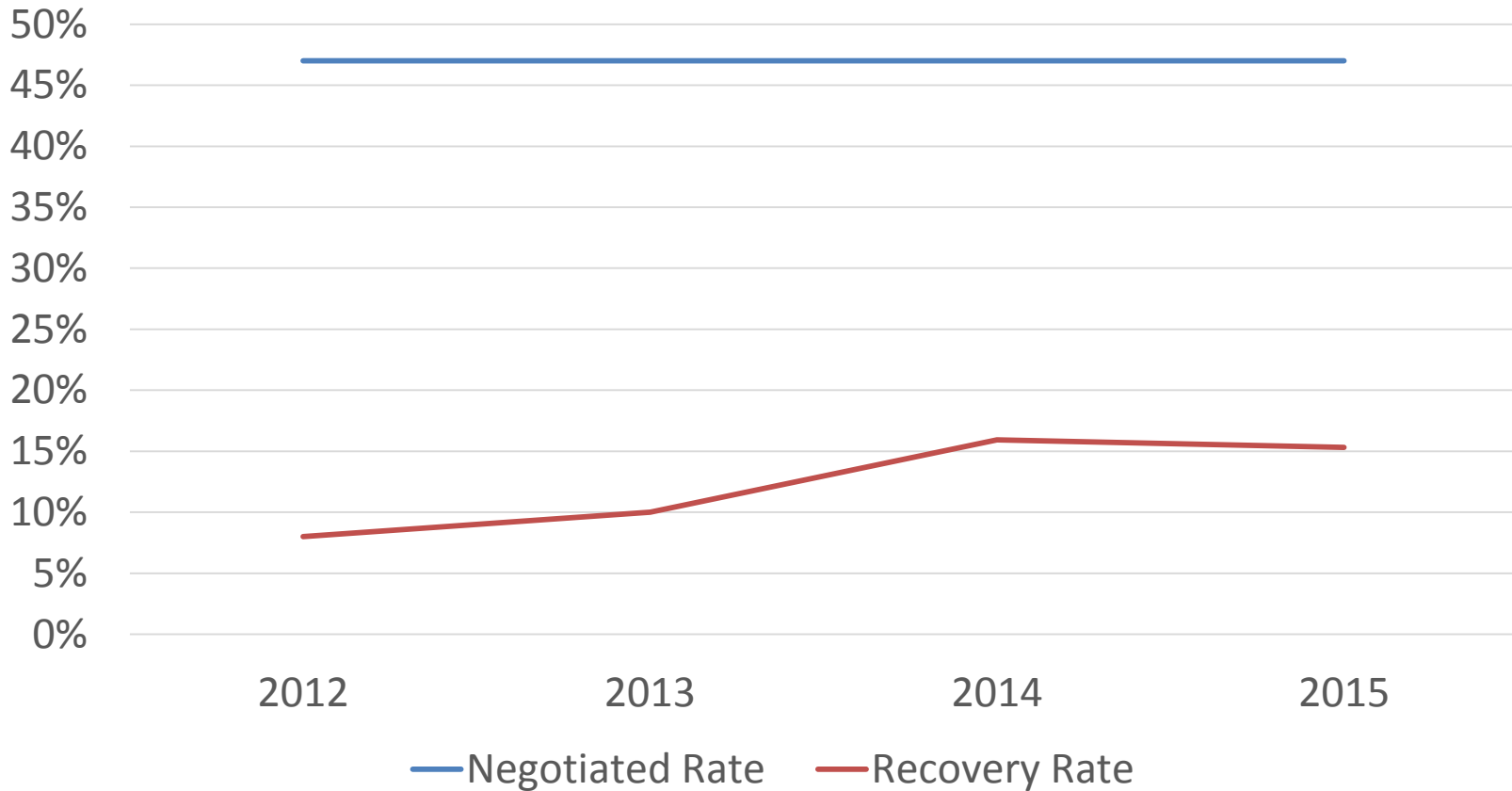
# FY 15 Funding by College/Division



# Facilities & Administration (F&A)



## NIU F&A Recovery Comparison



# Notable faculty investigators in FY 15



Dr. Wendy  
Bostwick

Assistant Professor  
Nursing and Health  
Studies



Dr. Joseph  
Magliano

Presidential Research Professor  
Psychology  
Center for the Interdisciplinary  
Study of Language and  
Literature

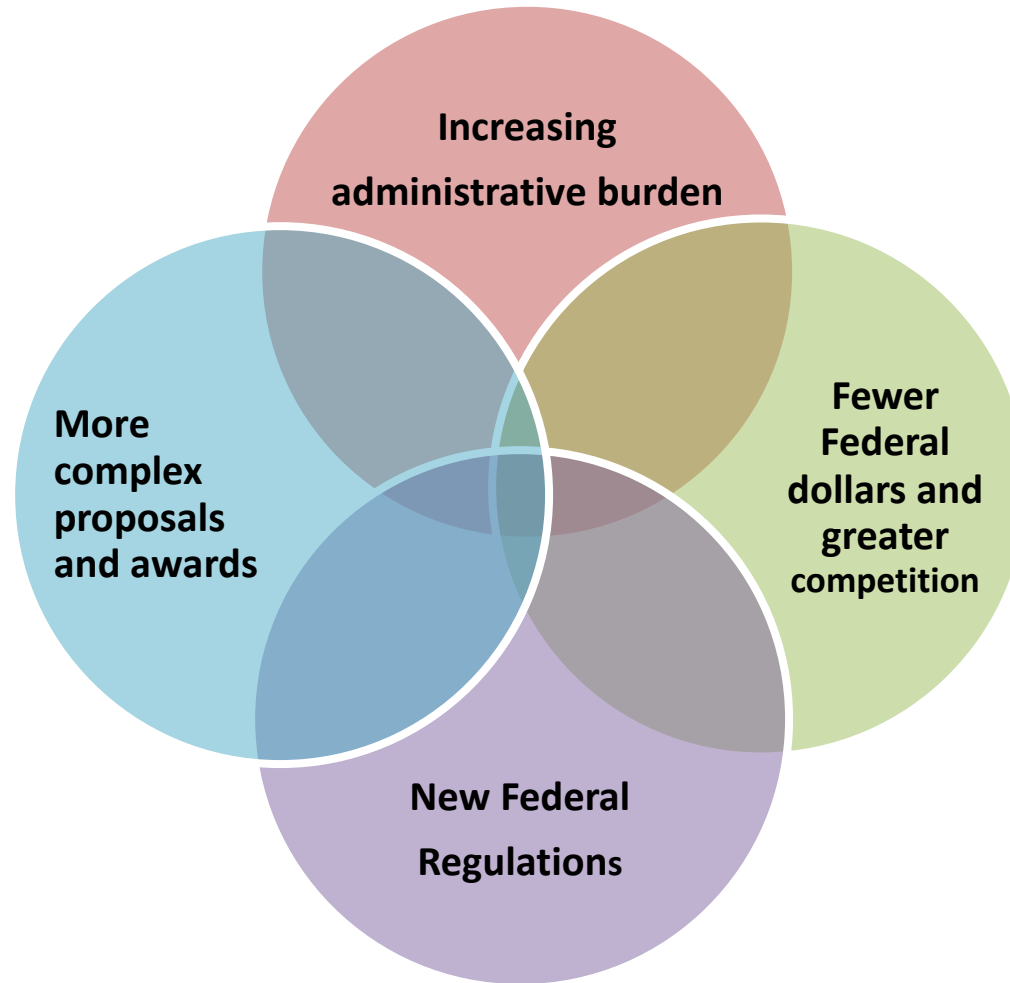


Dr. Mark  
Schuller

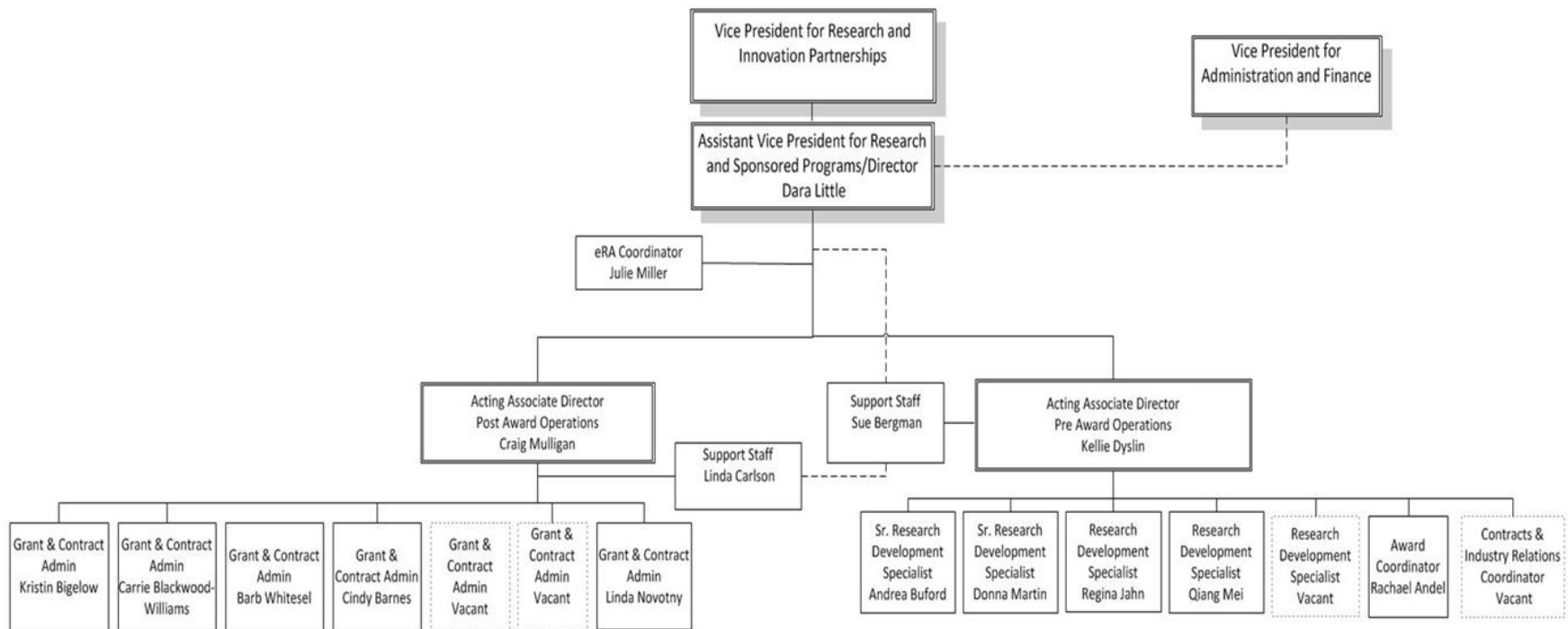
Assistant Professor  
Anthropology  
Center for NGO Leadership  
and Development



# Funding Climate: Sponsored Programs



# Sponsored Programs Administration



NORTHERN ILLINOIS UNIVERSITY

## Sponsored Programs Administration

*Division of Research and Innovation Partnerships*



# Our Long-Term Goals



- More convenient support for faculty in planning **and** managing their sponsored funding;
- Streamline grants administration processes to reduce administrative burden;
- Increase administrative efficiencies to help faculty in meeting sponsored program goals; and
- Enhance compliance throughout the sponsored program lifecycle.

# Our Short-Term Successes



- Pre and post staff now using one electronic system to track workloads and monitor activity between areas;
- Eliminated redundancy in our award notification process and transitioned from paper to electronic award documents;
- Launch of regular campus brown-bags for “meet with a Development Specialist and Grant Administrator” sessions.



# Final Thoughts



- ✓ Funding is holding steady but the composition of our funding is changing;
- ✓ Support for research and sponsored funding is a shared responsibility across many campus units;
- ✓ Support needs to be investigator focused and compliance centric; and
- ✓ The Division of Research and Innovation Partnerships and Sponsored Programs Administration is invested in identifying ways to reduce administrative burden and increase productivity.